

9-01

ШКОЛЬНЫЙ ЭТАП.

9-11 КЛАСС

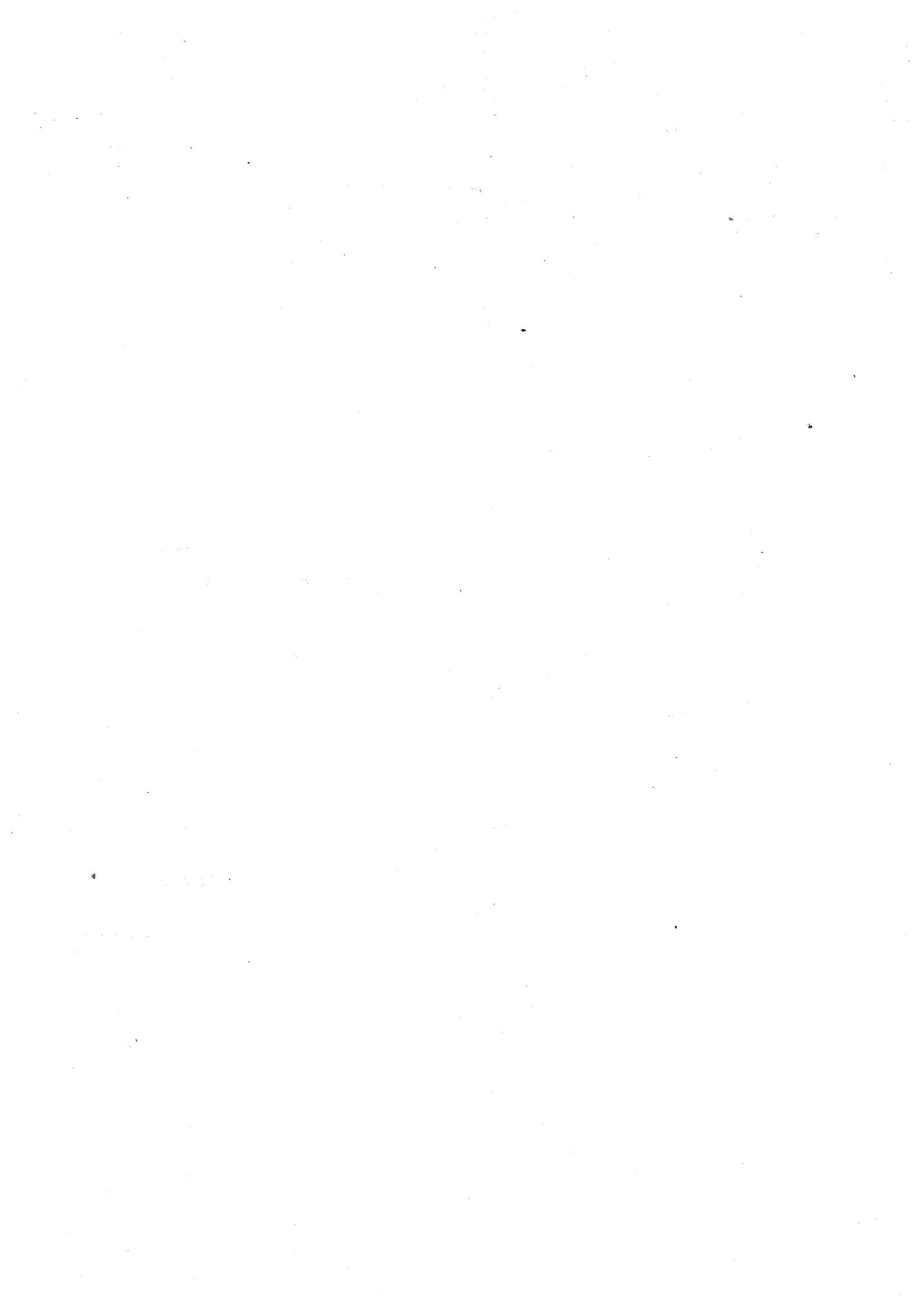
Time: 90 minutes

LISTENING (30 points)

Task 1

For items 1–10 listen to a talk on the radio about Welsh speakers in Patagonia, Argentina, and decide whether the statements (1–10) are **TRUE**, or **FALSE** according to the text you hear. You will hear the text **twice**.

1. Argentina is well known for traditional Welsh teas.
• True • False +
2. There are 600, 000 Welsh speakers in Patagonia.
• True • False
3. The first Welsh set up a colony in Argentina in the second half of the 19th century.
• True • False
4. The Welsh language assimilated into the American culture in the USA.
• True + • False
5. The first 153 colonists were doctors and farmers.
• True • False +
6. The early Welsh settlers survived a lot of hardships.
• True + • False
7. Local tribes taught the settlers to gather crops.
• True • False +
8. There are a lot of Welsh names in the south of Argentina.
• True + • False
9. The Welsh language is regularly taught in Argentina.
• True + • False
10. In the tea house, the speaker ate a delicious apple pie.
• True • False +



an offer... Houses on Dungeness don't come up for sale very often and this one had not been on the market for very long."

"Our carriage is a little different as while all our neighbours have passenger carriages, this is a guard's van," says Mark. "It has a lantern roof, so the guard could look up and down the line. There is only one other house on Dungeness with a lanternroof like this. The strange thing about our house is that it attracts this weird mix of nautical enthusiasts and railway enthusiasts, so we have found people standing outside who have been able to name the kind of carriage it is and the model type."

Kate and Mark got the keys to the house in March 2012. They pulled up carpet to reveal a mishmash of wooden and concrete flooring, and ripped off the hardboard that boxed in walls and carriage windows in the living room. Builders worked for about six months reconfiguring the space, sandblasting asphalt off the floors and installing new modern plumbing and electric heating systems and a log-burning fireplace. Then Kate and Mark started decorating, using predominantly white as a backdrop.

The house is compact, so maximizing the sense of space was crucial. "Painting it all white allows for more flow through the house," Kate says. "Separate colors in all the rooms would make the place feel really tiny. We also wanted furniture with thin legs that allow you to see underneath. When you can see the floor beneath a chair or sofa, it creates a sense of space." In fact, now there's a mix of midcentury furniture and contemporary pieces, along with *Mini Moderns* products, including paint, wallpaper, bedding, pillows and kitchenware.

The duo painted the outside of their home in smart black. Many of the other homes on Dungeness beach, including the one that belonged to film director Derek Jarman, wear this striking colour.

When it came to personalising the house, Mark and Keith deliberately kept away anything too 'seasidey'. "Living here, we have started to understand real sea and real weather," says Mark. "This is not a pretty seaside village. We are on the beach – so we don't need driftwood and those kinds of references."

"The house is only small, though, so we have to be quite disciplined about what we bring down here," Mark says. "We just have things we need and love, and the great thing is that it's much tidier than our London live-work space." Kate agrees, laughing: "We haven't overfilled it, and we are very careful about leaving it in good shape, so as soon as we come down here on a Friday night, that's it! We can switch off, relax and enjoy it."

1. Before buying a house to Dungeness Kate and Mark

1. had occasionally worked from there.
2. had only heard of the picturesque place.
- + 3. had used it as a weekend escape destination.
4. had lived in a rented converted home there.

2. For Kate and Mark buying accommodation in Dungeness was

- + 1. a quick decision purchase.
2. a well-considered buy.
3. a life-long dream.
4. a planned investment.

3. Kate and Mark's house attracts

1. former sailors and engine-drivers.
2. old lantern collectors.
3. bird and sea watchers.
- + 4. people having different interests.

USE OF ENGLISH
(30 points)

Task 1 (20 points)

For items 1–10 read the text below. Use the word given in brackets to form a newword that fits in the space in the same line. There is an example at the beginning (0).

Example:

0 Sunbathing

TROUBLE OVER THE GARDEN WALL

For many people in Britain, their back garden is a vital part of their life. You can potter around doing a bit of gardening there, sit out there on sunny days and have tea, drinking in all the nature around you, maybe even do a bit of (0) sunbathing (SUNBATHE).

But people's garden habits are changing. Many British back gardens have been turned into 'outdoor rooms'. They are being used as kitchens and dining rooms (about a third of British homes have barbecues), as offices for the self-employed and as general (1) (ENTERTAIN) areas complete with built-insound systems, hot tubs, skateboard ramps and trampolines.

entertainment

But that's where the trouble starts. Those hot tubs have whirring motors, those skateboards clatter, those sound systems can be heard half a mile away and those trampolines allow children to peek over the garden fence. And that means the

(2) (TRANQUIL) and the privacy for the people next door have gone. *Tranquility*

(3)

Every summer, complaints about noisy and otherwise (3) intruding (INTRUDE) neighbours increase.

So does the number of 'anti-social (4) behaves (BEHAVE) orders' (known as 'ASBOS') and 'noise-reducing orders' issued by local authorities.

These are laws which would be regarded as (5) ridiculous (RIDICULE) in many other countries.

The British have some decisions to make. What are their gardens for? And what constitutes an (6) invading (INVADE) of privacy?

And when does your privacy become someone else's (7) night (NIGHT)? In the 1990s, many suburban dwellers enthusiastically planted a coniferous hedge in their gardens.

The attraction of these plants was that, as they grow up to a metre in (8) (HIGH) high every year, it only took a few years before their garden was entirely protected from prying eyes.

(9)

And their neighbour's house was shrouded in (9) dark (DARK) even in the summer!

In the end, the problem was solved by laws (10) powered (POWER) councils to order a hedge to be cut down to two metres high.

8-01

It was a lesson I'll never forget. I was sitting on English lesson and just did nothing. Our teacher left the class because our director ^{had} called him. My classmates ^{were} was speaking something, each other. They were very loud and noisy. I've got some interest: "What are they talking about?" - I thought. I rotated and saw my classmate Alex. I asked him: "What's going on?" And he told me that our English teacher was fired while the class. That was so strange, so I decided to leave the class and check, what ^{had} have just happened. When I did it, I heard something. It was a dialogue between our director and English teacher. The director said

(114)

содержание: 1

коллекция: 0

лексика: 2

грамматика: 1

орфография: 2

} 65.

Task 2 (10 points)

Match the idioms 13-20 with their meanings.

11e 12c 13d 14d 15a

11	Keep your shirt on	a	You are joking
12	Go fly a kite	b	It's raining very hard
13	You're pulling my legs	c	Get away from me; leave me alone
14	Eat your words	d	You said something and now you wish you hadn't said it Wait a minute; stay calm
15	It is raining cats and dogs	e	Wait a minute; stay calm

WRITING
(20 points)

15

Send us a story!

We are looking for stories for our English-language magazine for young people.

Your story must begin with this sentence:

It was a lesson I'll never forget.

Your story must have:

- an exciting plot
- (a) charismatic character(s)

Write your story in 150-200 words.

4. Among the first things after getting the keys the couple
1. transformed the rooms and installed the conveniences.
 2. painted the interior of the house dark blue.
 3. kept the original asphalt floor and walls of the house.
 - ~~4.~~ added new carriage windows for more light.

5. The sense of space in the house is created by

1. the windows and furniture.
- ~~+~~ 2. the furniture and colours.
3. the colour and decorations.
4. the ceilings and furniture.

6. While decorating their house Kate and Mark tried

- ~~1.~~ to make their house fit in the seaside environment.
2. to use wood in the house decorations.
3. to avoid traditional and stereotypical elements.
4. to make their house look like a sea resort.

7. The interior of the couple's house is created using

1. antique furniture from second-hand shops.
2. entirely the latest designs and pieces.
- ~~3.~~ handmade pieces and decorations.
- ~~4.~~ goods produced by their own company.

8. The exterior of Kate and Mark's house

1. is similar to other dwellings in the area.
- ~~2.~~ is strikingly different from other dwellings.
3. is innovative and unusual to the area.
4. is stereotypical and unconventional.

9. In comparison to their London home, the beach house

1. is very similar to a capital dwelling.
2. is less cluttered and messy.
- ~~3.~~ is cosier and much lighter.
4. is much warmer and neater.

10. What is NOT TRUE about Kate and Mark's house?

1. The house belongs to a particular historical period.
- ~~+~~ 2. Kate and Mark painted each room a different colour.
3. The house is warmed by electricity and wood.
4. Kate and Mark discovered hidden windows in the house.

Task 2

For items 11–15 listen to the dialogue. Choose the correct answer to answer questions 11–15. You will hear the text **only once**.

11. Ann doesn't eat everything because she

1. has a problem.
- + 2. is on a diet. ✓
3. is allergic to some food.

12. Ann can eat fish which is

1. fried.
2. baked.
- + 3. boiled. ✓

13. Bob offers to order chicken because it is

1. plain and simple.
2. delicious. ✓
3. served with a cream sauce.

14. The restaurant serves chicken

- + 1. roasted. ✓
2. grilled.
3. baked in the oven.

15. What is NOT TRUE about Ann?

1. She doesn't drink alcohol.
- + 2. She doesn't eat potatoes. ✓
3. She eats beans.

33.

READING (20 points)

Task 1

For items 1–10, read the passage below and choose the option which best fits according to the text.

A Rail Carriage Becomes a Delightful Coastal Cottage

Not many people can count a train car as their ideal place to get away from it all, but when Mark Hampshire and Kate Stephenson want to escape, they head to their converted Victorian guard's carriage, or train conductor's car, on the Dungenessheadland in Kent, in southeast England. This converted home is their haven away from London, which is a couple of hours away by car and is where they run their interiors company, *Mini Moderns*.

"I used to work as an art director in fashion and we would do shoots down here on the beach during the 90s," says Kate. "That was my first introduction to Dungeness. After Mark and I met, we used to come down here from London quite regularly on a Sunday just to see the sea and kick off the working week. It was just a way of getting away from everything – and it still is." On one of these Kent coastal visits, they suddenly ended up buying a house.

"We had exhausted all the secondhand shops in Rye, so we started looking in the estate agents' windows," says Kate. "We looked at the cabin on the Sunday, and by Monday we had put in